

4

3

2

1

ZONE	REV.	REVISION DESCRIPTION	ECN NO.	DATE
C4	D	AMP RATING ON PUSHBUTTON WAS 5; GML	ECN0047395	04-DEC-2008

PERFORMANCE CHARACTERISTICS

- CALIBRATION**

AMBIENT TEMPERATURE	MIN. ULT TRIP	MAX. ULT TRIP	200%	400%
-54°C	105%	170%	15 - 65	2.3 - 7.5
25°C	105%	145%	15 - 65	2.3 - 7.5
71°C	90%	140%	15 - 65	2.3 - 7.5
85°C	90%	140%	10 - 65	2.3 - 7.5
- RUPTURE**

120 VAC	400 CYCLE	2,800 AMPS
30 VDC		6,000 AMPS
- DURABILITY**

120 VAC MECHANICAL	400 CYCLE (NO LOAD)	5,000 CYCLES
RESISTIVE LOAD		5,000 CYCLES
INDUCTIVE LOAD		1,250 CYCLES
- VOLTAGE DROP, WHILE CARRYING RATED CURRENT**

AMP RATING	MAXIMUM VOLTAGE DROP
65	.3 V
- VIBRATION**

FREQUENCY	G LEVEL
5 - 10 CPS	0.2 DOUBLE AMPLITUDE
10 - 23 CPS	+1 G
23 - 74 CPS	0.036 DOUBLE AMPLITUDE
74 - 300 CPS	+10 G
300 - 600 CPS	+15 G
600 - 700 CPS	+14 G
700 - 1500 CPS	+10 G
- OPERATING FORCE**

OPENING: 1.5-8.0 LBS.
CLOSING: 4.0-12 LBS.
- DIELECTRIC STRENGTH**

1500 VAC, RMS.
- INSULATION RESISTANCE**

100 MEGOHMS AT 500 VDC.
- EXPLOSION PROOF**

WHILE INTERRUPTING RUPTURE CURRENTS.
- HUMIDITY**

240 HOURS.
- CORROSION RESISTANCE**

50 HOURS.
- SAND AND DUST**

12 HOURS.
- MECHANICAL SHOCK**

25 G FOR 11±1 MILLISECONDS.
- OVERLOAD CYCLING**

100 CYCLES AT 200% RATED CURRENT.
- FUNGUS RESISTANCE**

28 DAYS.
- STRENGTH OF TERMINALS**

25 LB. TENSILE LOAD, 45 IN-LBS. TORQUE LOAD.
- STRENGTH OF MOUNTING PROVISIONS**

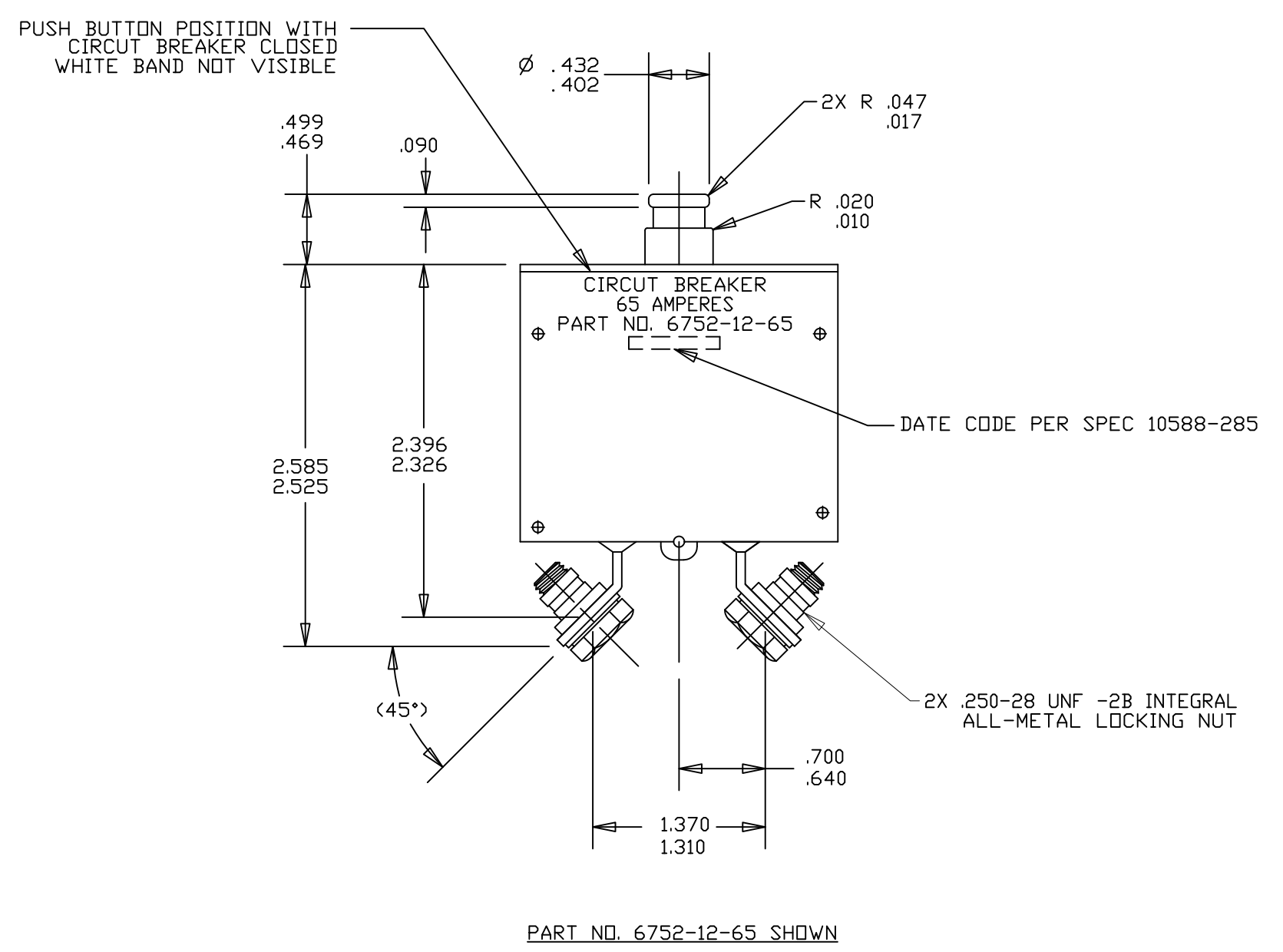
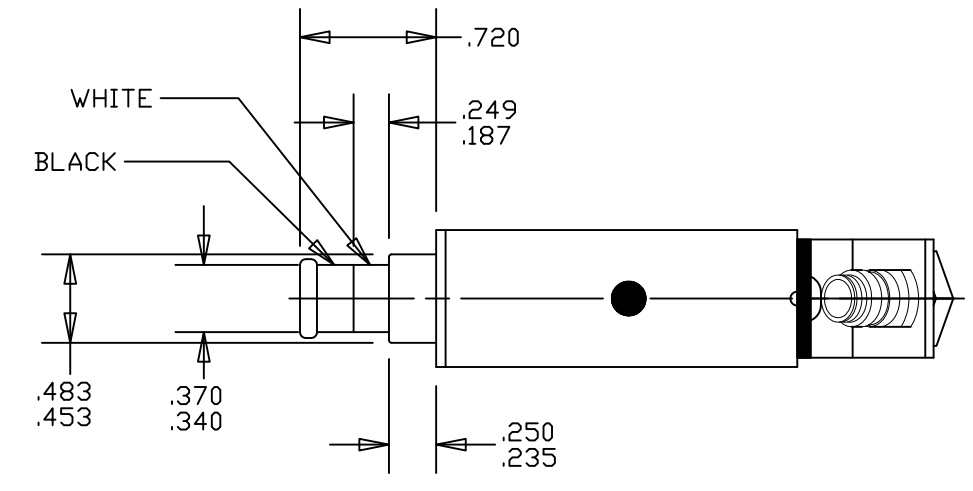
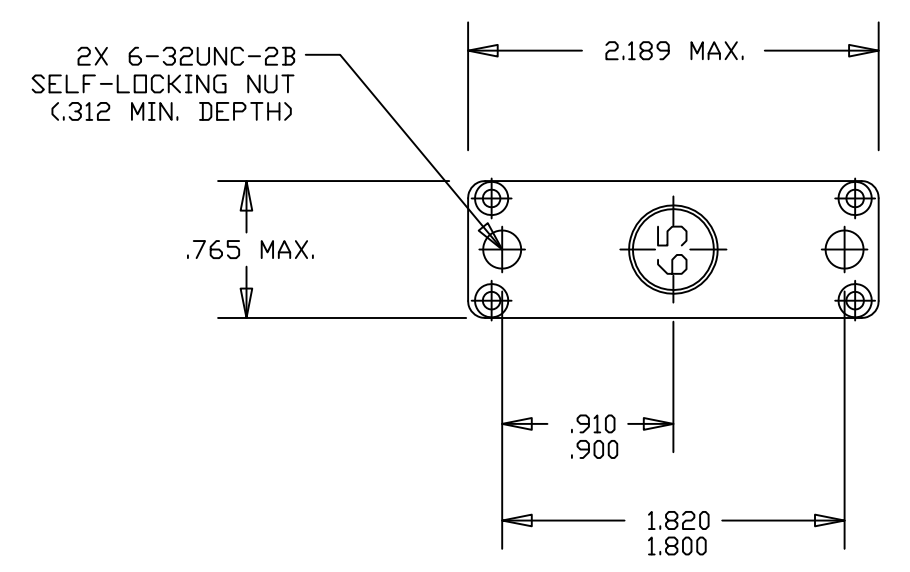
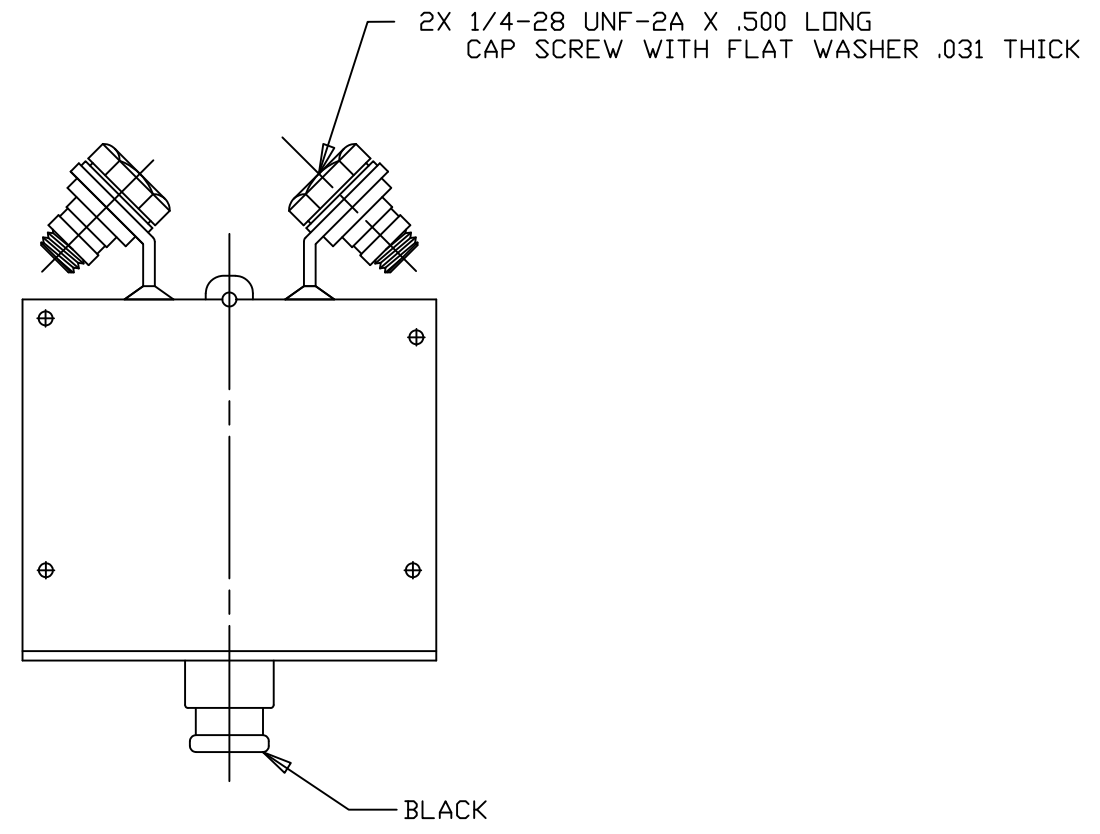
30 LB. AXIAL LOAD, 10 IN-LBS. TORQUE LOAD.
- STRENGTH OF ACTUATOR**

25 LB. AXIAL LOAD, 40 LBS, NORMAL LOAD.
- ACCELERATION**

10 G'S FOR 1 MINUTE.
- RECLCLOSING**

NO AUTOMATIC RECLOSE.
- TRIP FREE**

RESETTABLE ONLY AFTER MOVING THE ACTUATOR TO THE FULL OPEN POSITION.



FOR REFERENCE ONLY, CHECK LATEST REVISION BEFORE USE. PARTS MADE TO THIS PRINT MUST CONFORM TO E9898 REV. E

DRAWN G.LAPATI DATE 01-MAY-2008	NEITHER THIS PRINT NOR THE INFORMATION CONTAINED HEREON IS TO BE USED AGAINST THE INTERESTS OF SENSATA TECHNOLOGIES, INC. OR AGAINST THE INTERESTS OF ANY OF ITS AFFILIATED COMPANIES OR WHOLLY OWNED SUBSIDIARIES	529 PLEASANT STREET P.O. BOX 2964 ATTLEBORO, MA 02703
ENGINEER K.WASHBURN DATE 01-MAY-2008	UNLESS OTHERWISE SPECIFIED DIMENSIONS ARE IN INCHES TOLERANCES DECIMALS ANGLES	TITLE 6752-12-65 TYPE PUSH PULL CIRCUIT BREAKER ENVELOPE DRAWING
APPROVED A.NAULT DATE 01-MAY-2008	x.xxx ±.030	DWG NO. 6752-12-65
APPROVED W.BENTLEY DATE 01-MAY-2008	THIRD ANGLE PROJECTION DO NOT SCALE DRAWING	REV. D
	SIZE C	SCALE 1:1 AUTOCAD SHEET 1 OF 1

4

3

2

1